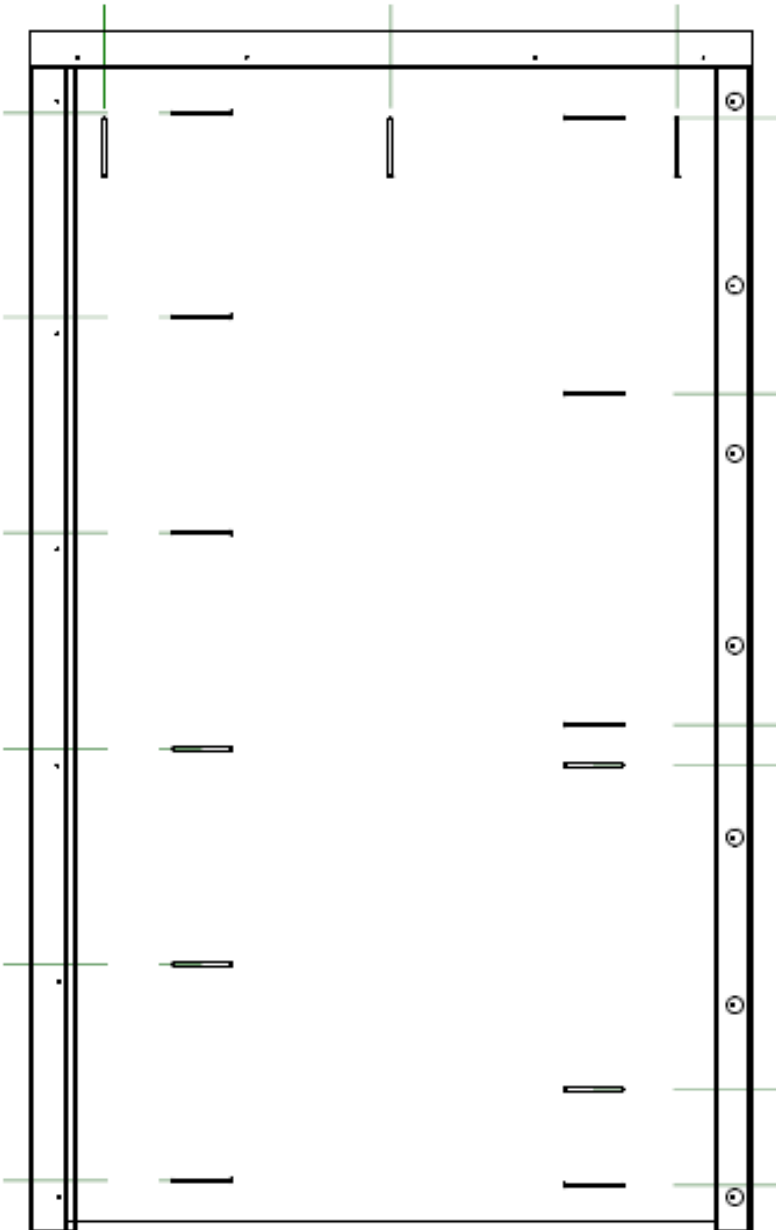




PIVOT Installation Instructions

11/2023 v2

1. Frame Installation

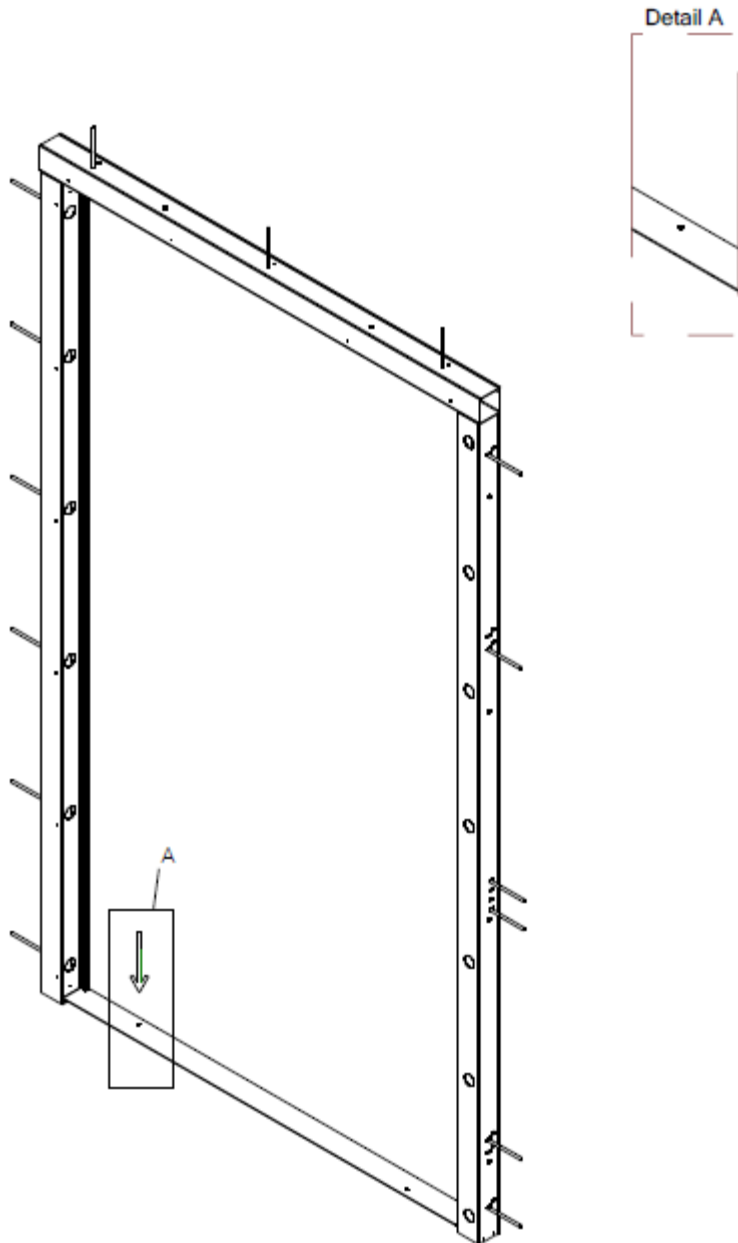


1. Fix and level the frame

Use a laser or manual level to check that the heights of the frame are plumb

Fix the frame using Torx (Buldex) T30 cement screws or equivalent. After fixing the frame, fill up with polyurethane foam (PU)

2. Template Use



1. Drill a hole in the floor using the template provided together with the frame

Diameter: Ø32

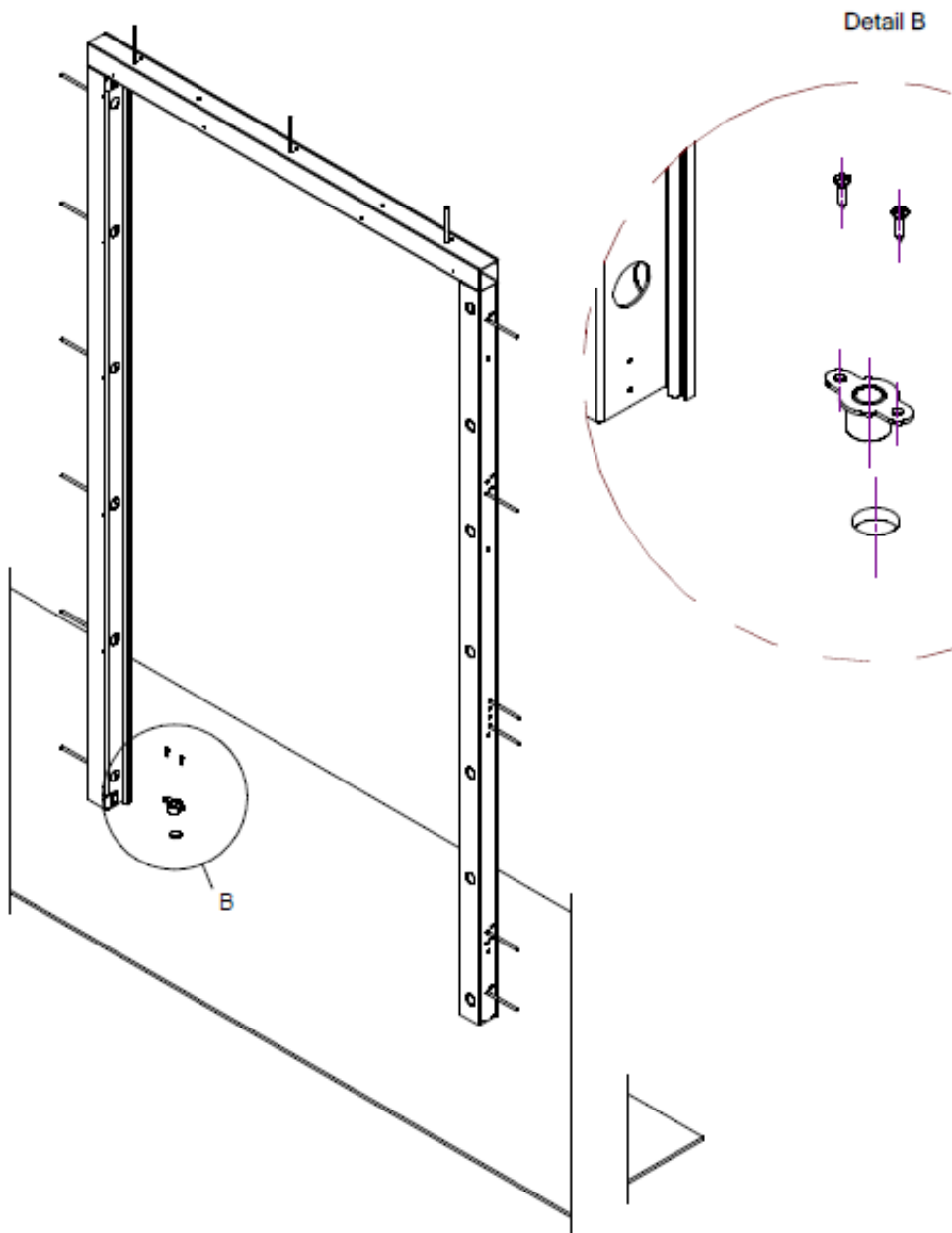
Depth: 37-40mm



The template offers guides for both right and left opening doors. Use only the desired guide accordingly

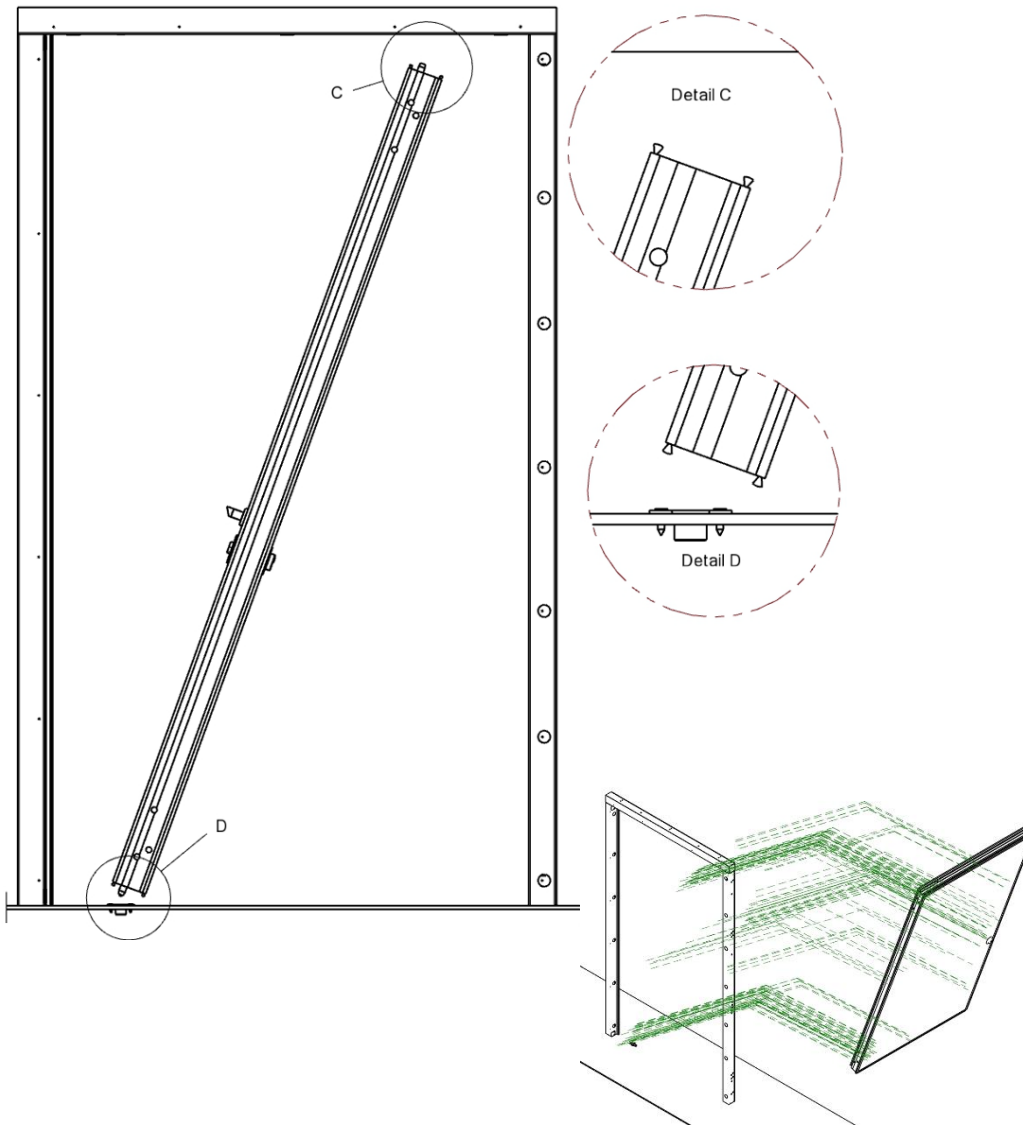
2. Remove the template

3. Pin Reception Placement



1. Insert the pin reception piece to the drilled $\varnothing 32$ hole using PU structural adhesive
2. Fix with screws before the adhesive dries
3. Allow the adhesive to dry before moving to the next step

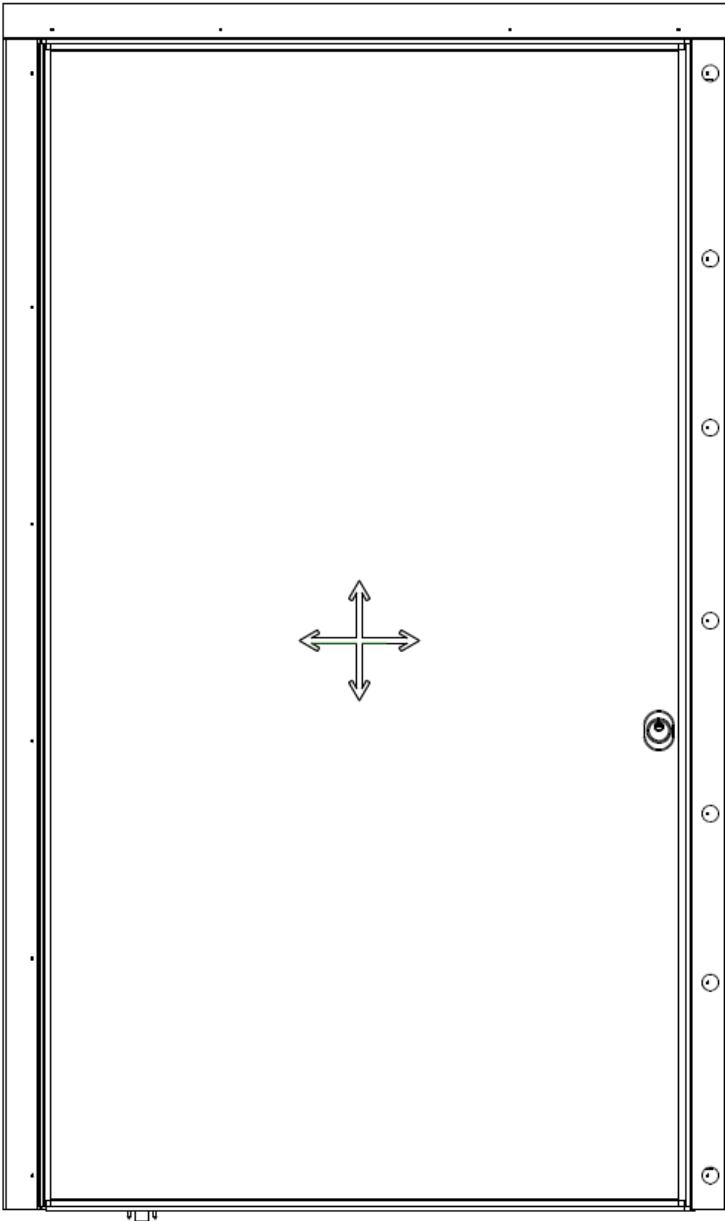
4. Doorleaf Placement



**BEFORE PROCEEDING TO STEP 4,
SEE LAST PAGE
PIVOT HINGE USER MANUAL**

1. In angled position and with the pivot pins tucked in, place the doorleaf close to pin reception piece. (screw 1)
2. Adjust the pin of the bottom hinge so that it is out of the doorleaf for 25-30mm (screw 1)
3. Pick up the doorleaf to vertical position and take out the top pin so that it is inserted to the top pin reception on the frame (screw 1)
4. Adjust the pivot pin to the correct height, using lifting tools to assist the movement, such as air-lifters (screw 1)

5. Final Adjustment



1. Close the door and check the perimeter of the doorleaf-frame rebate. Adjust the hinges accordingly if needed (screw 2)
2. While adjusting the height of the doorleaf, always use lifting tools to assist the hinge movement.

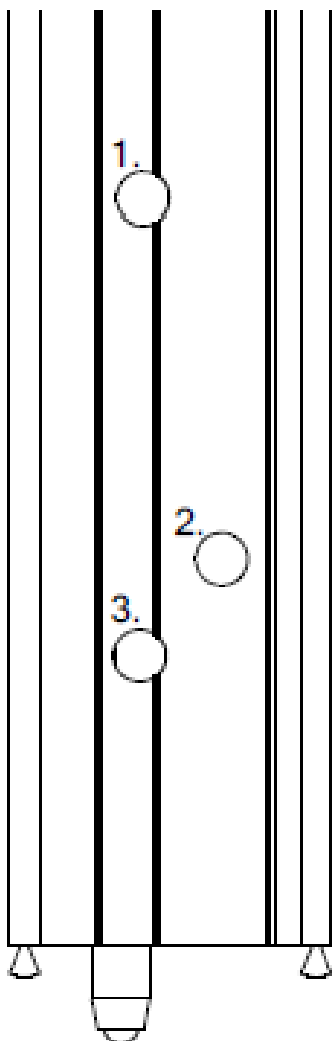


- 3. FIX THE PINS IN PLACE (screw 3)**

PIVOT HINGE USER MANUAL

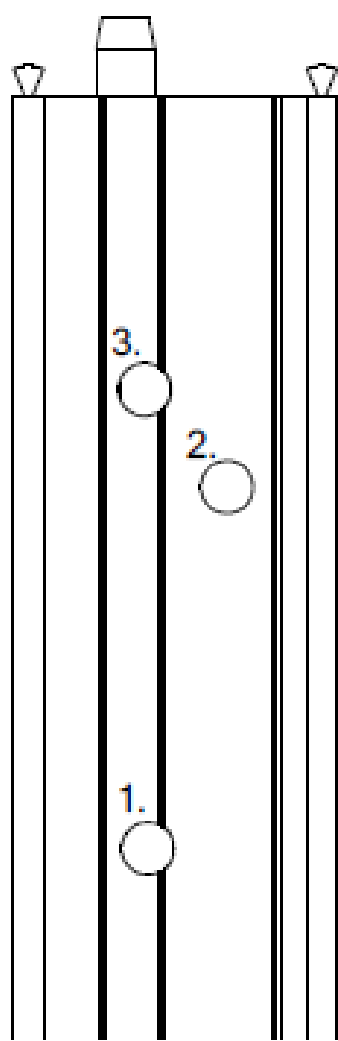
Doorleaf Side
View

Bottom Hinge



Doorleaf Side
View

Top Hinge



Instructions below are applied to both hinges

Screws nr1 – Pin Adjustment



Clockwise

Pin Extrusion



Counter-clockwise

Pin Intrusion

Screws nr2 Doorleaf Displacement



Clockwise

Displacement towards the lock



Counter-clockwise

Displacement away from the lock

Screws nr3 Pin Block



Clockwise

Pin block



Counter-clockwise

Pin Unblock



Screws nr3 must always be unblocked (loose) when adjusting the hinge, and blocked as a final step of installation!